

Only for AY2021/2022



**Inbound Exchange Program Guideline  
(NCTU Version)**

Office of International Affairs





# Office of International Affairs (OIA)



## Contact Information

### Outbound Exchange Coordinator (NCTU students to your university)

- Ms. Cherrie Chow
- [cherrie@nycu.edu.tw](mailto:cherrie@nycu.edu.tw)

### Inbound Exchange Coordinator (Students from your university to NCTU)

- Ms. Lily Cheng
- [lilycheng@nycu.edu.tw](mailto:lilycheng@nycu.edu.tw)

### Coordinator for Exchange Student Services

- Ms. Iris Chuang
- [irischuang@nycu.edu.tw](mailto:irischuang@nycu.edu.tw)

### Coordinator for Student Exchange Agreements

- Ms. Karin Lin
- [karinlin@nycu.edu.tw](mailto:karinlin@nycu.edu.tw)

### General Inquiries

- [nctu\\_ia@nctu.edu.tw](mailto:nctu_ia@nctu.edu.tw)



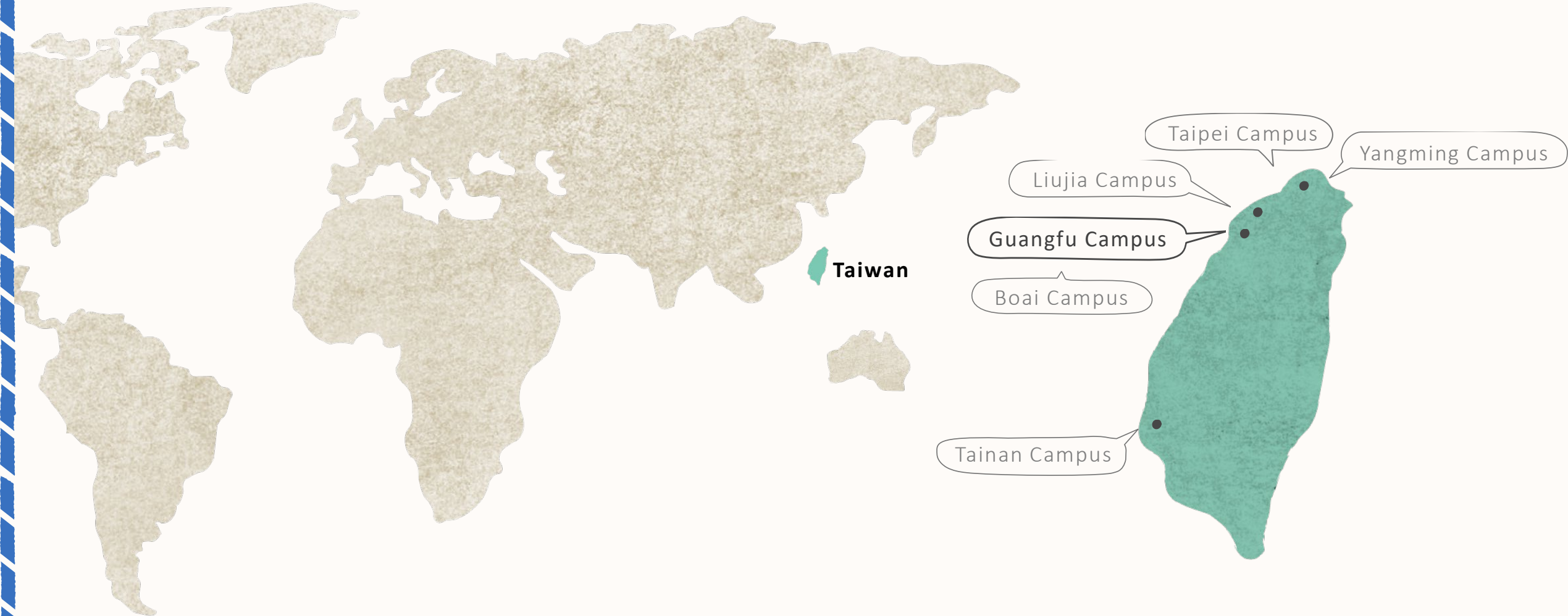


# Facts about NCTU






# Campus Map




# NCTU at a Glance

## Key Figures and Rankings

 **Students**  
**13,146**

**5,627** Undergraduates  
**7,519** Graduates

 **Faculty**  
**743**

(adjunct excluded)

(largest number of IEEE fellows in Taiwan)

 **Rankings**

QS [Asian] University Rankings, 2020: #44

QS World University Rankings, 2020: #227

51<sup>st</sup>  
|  
100<sup>th</sup>

Engineering -  
Electrical & Electronic

51<sup>st</sup>  
|  
100<sup>th</sup>

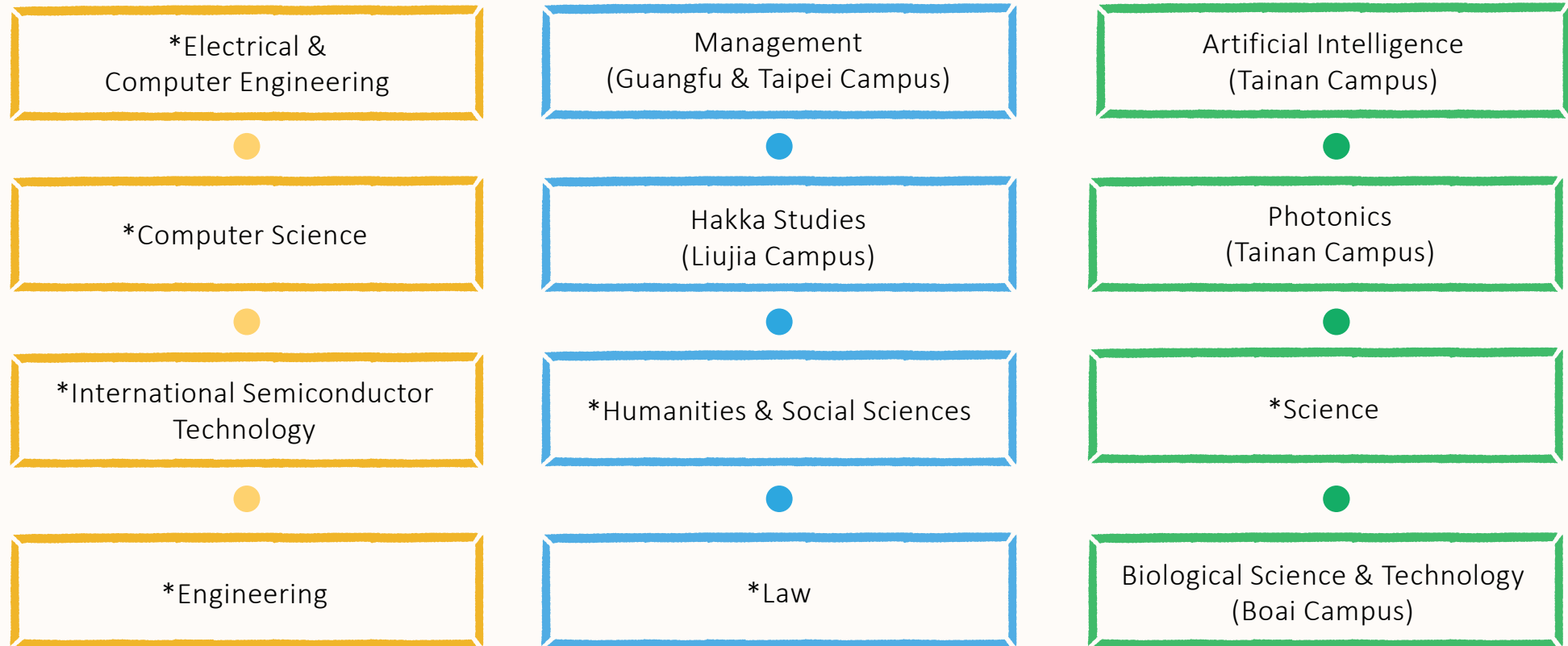
Computer Science &  
Information Systems

83<sup>st</sup>

Engineering and  
Technology

\* College of Management was accredited by AACSB (Association to Advance Collegiate Schools of Business) since 2007.

## 12 Colleges



\*Located in Guangfu Campus, NCTU main campus.



# Inbound Exchange Program





# Introduction

| Types                                     | Remarks   | How to apply   |
|---|---|--|
| Exchange Program                          | Students enrolled (or matriculated) at partner institutions and nominated by coordinators of home institutions.                         | The nomination link will be sent to coordinators of partner institutions before nomination period. |
| Visiting Program<br>(fee-paying exchange) | Students enrolled at partner institutions but not officially nominated by home institution; or, students from non-partner institutions. | <a href="#">Click Here !</a>   |



# Important Dates

## Application timeline

Students may choose to exchange for one semester or one academic year.

\*Academic year at NCTU begins in September; full academic year exchange can only begin in Fall Semester.

| Semester                          | Nomination Deadline        | Application Deadline     |
|-----------------------------------|----------------------------|--------------------------|
| Fall Semester<br>(Sep. to Jan.)   | March 30 <sup>th</sup>     | April 15 <sup>th</sup>   |
| Spring Semester<br>(Feb. to Jun.) | September 30 <sup>th</sup> | October 15 <sup>th</sup> |

\*The confirmed academic calendar will be announced around late June each year.

# NCTU Course Timetable

|                    |    |   |
|--------------------|----|---|
| <b>Instruction</b> | 1. | Website: <a href="https://timetable.nctu.edu.tw/">https://timetable.nctu.edu.tw/</a>  |
|                    | 2. | Choose English in “Language”, and the system will switch to English version.  |
|                    | 3. | Choose “College” in “Search for Department” and search for the program under the college you choose.  |
|                    | 4. | Tick the box in front of “Other Search Parameters” and click on “English Medium Courses”.   |
|                    | 5. | The course timetable will be finalized about two months before the start of each semester. Students could refer to the timetable of the previous semesters during application period. |





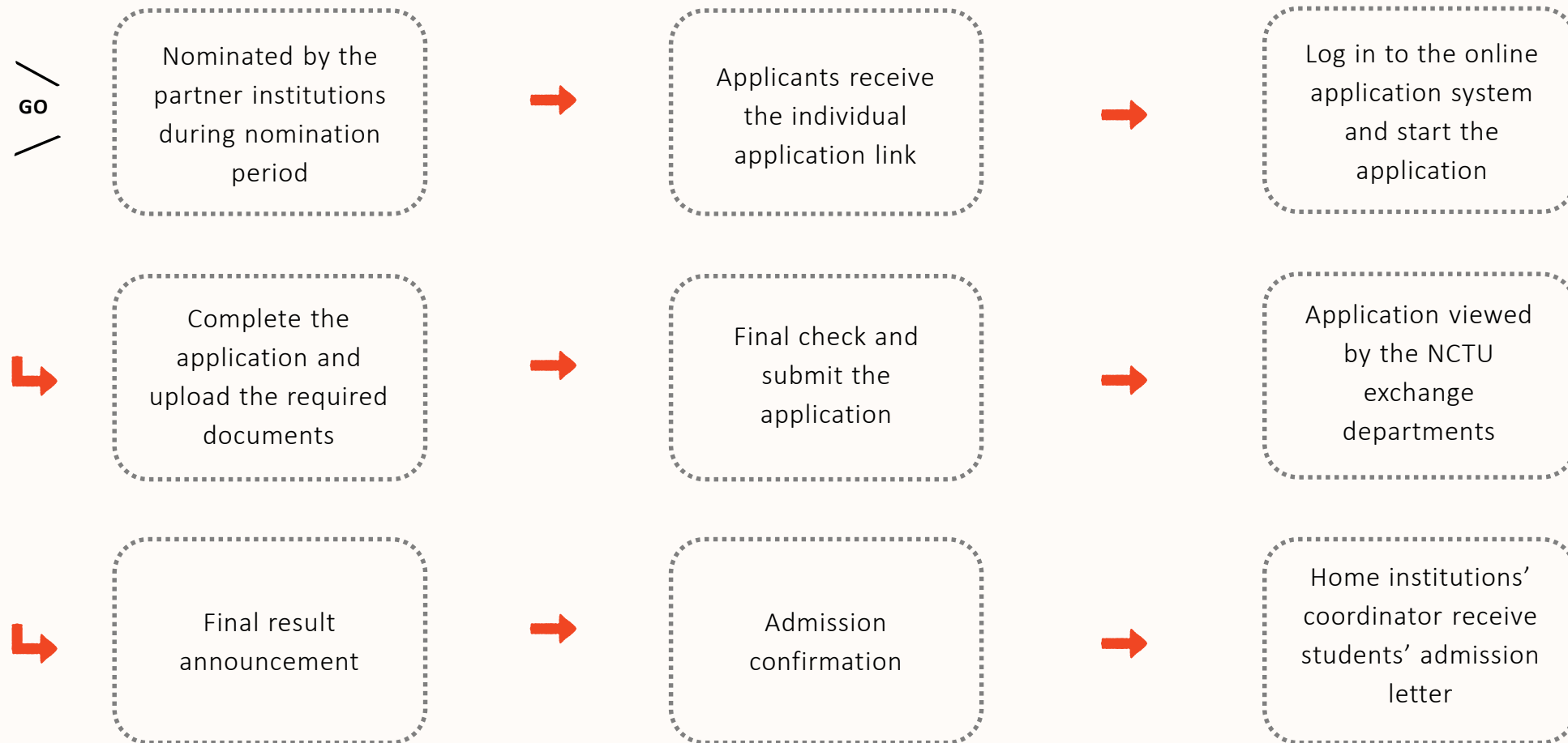
# NCTU Departmental Application Requirements

**\*\*Please read the requirements carefully in the following link before applying.**

<https://drive.google.com/file/d/122j-Fur8Ja4MsdoKv9ec07HeHGr2Qqbj/view?usp=sharing>

1. The department would review the applications and the supporting documents; each department reserves the right to reject or re-allocate applicants to appropriate department.
2. Minimum credit requirement (per semester)  
**Undergraduate: 9 credits; Graduate: at least 2 academic courses.**  
(Please check with home institution for credit transferability)
3. **Students are able to choose courses across departments or colleges (not limited to the enrolled department/college only).**  
Please be aware that some professors may require the students to own basic knowledge about the course.
4. Some popular courses are very competitive and exchange students may not be able to get in. It is suggested students to be more flexible about course choice.
5. **College of Management** is limited to “Final-year undergraduate students or graduate students” . Most English-taught courses are offered in graduate level.

# Application Procedures



# Application Documents

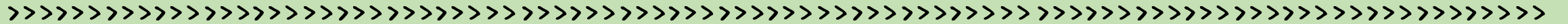
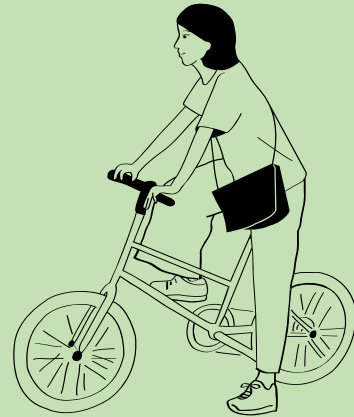
## 8 Documents

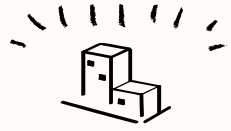
Please prepare the following documents and submit to the online application system. All the documents should be PDF format and in English.

| NO. | Documents                            | Remarks   |
|-----|--------------------------------------|---|
| 1   | Application form                     | Both applicant and home institution' s coordinator have to sign on the application form.                          |
| 2   | Curriculum vitae (CV)                | Your personal resume in English.  |
| 3   | Study Plan                           | It may include your motivation and a tentative list of courses you would like to take during the exchange period. |
| 4   | Official transcript                  | The transcript that is approved by the home institution and is in English.  |
| 5   | Official enrolment letter            | The enrolment letter from the home institution or "valid" student card.   |
| 6   | Passport<br>(Information page)       | It should have at least 6 months of validity.   |
| 7   | *Supporting document<br>(optional)   | E.g. proof of language proficiency, certificate of awards or competitions, etc.                                   |
| 8   | *Recommendation letter<br>(optional) | The letter from the home institution' s coordinators or professors.   |



# Facilities and Services





## University Facilities

- 24 hours study room in University Library
- 24 hours computer room
- Self-study center
- Prayer room
- Bookstore
- Dry cleaning service
- Hair salon & optician



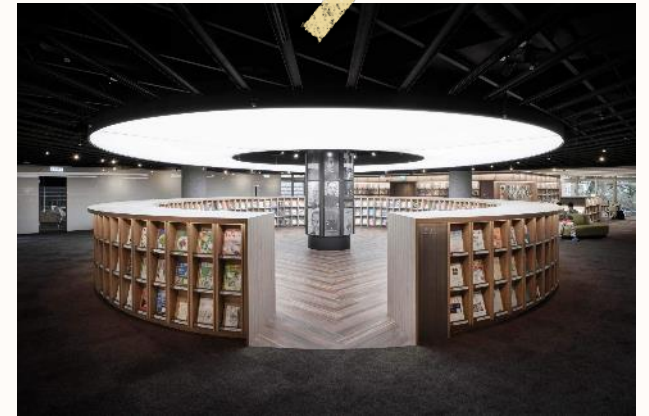
1 Swimming Pool (outdoor/ indoor)



2 Fitness Center



3 Dining Hall



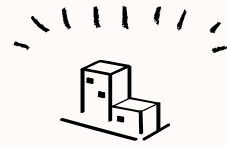
4 Library



## Division of International & Cross-strait Services (ICS)

ICS is part of the Office of International Affairs, and is established to offer on-site services, such as accommodation, insurance, visa, registration and other student needs. Furthermore, International student society, host-family arrangement, and international student emergency are taken care of by ICS as well.





## Student Accommodation

ICS staff will assist with on-campus accommodation application (depends on the availability).



Please note that it is unfortunately not possible to apply for a specific dorm or room.



## On-Site Orientation

---

The orientation will be held at the beginning of each academic semester. It will introduce NCTU to new international students and covers important and helpful topics.

## Free Chinese Courses

- One-on-one tutoring
- Chinese Cultural Salon: Cultural experience courses
- Courses range from introductory to advanced levels (4 levels)
- Elective courses focusing on useful situational conversations



NCTU Chinese Language Program, LTRC

National Chiao Tung University  



Office of International Affairs

<https://oia.nctu.edu.tw/en/short-term/incoming-exchange/>

